

Big TowTM

TRAILERS

Offering a full line of the highest quality construction, utility and industrial trailers on the market - 1 ton to 55 ton capacity.

MODEL:
B-9B

DROP DECK BEAVERTAIL



3 ft. beavertail standard



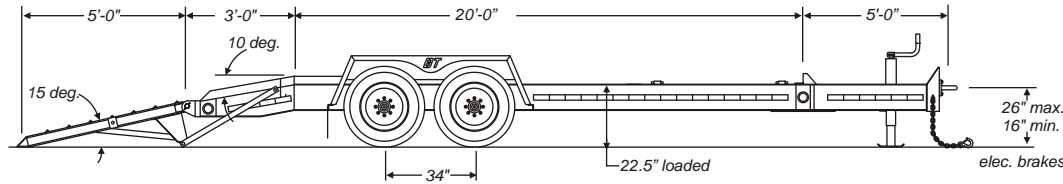
B-9B

866-397-8481

Fax: 320-693-7921

www.bigtowtrailers.com





Manufacturer reserves the right to modify, without notice, specific designs and specifications as deemed advisable on the trailer described herein without obligation in regards to trailers previously sold. Written warranty covers each trailer. No other warranty expressed or implied is made. Warranty on tires and brakes through original manufacturer. All dimensions are approximate. Some equipment shown may be optional. See your Big Tow dealer for more information.

Specifications		B-9B
WEIGHT (lbs/kg)	4,660 / 2114	
CAPACITY (lbs/kg)	18,000 / 8165 with adequate hitch load	
DECK LENGTH (ft-in/mm)	20'-0" / 6096	
DECK HEIGHT (in/mm)	22.5" / 572 empty	
OVER-ALL WIDTH (ft-in/mm)	8'-6" / 2591	
LOAD WIDTH (in/mm)	82" / 2083 between fenders	
TONGUE LENGTH (ft-in/mm)	5'-0" / 1524	
RAMPS	Adj. 5'-0" x 19.25" / 1524 x 489, spring assist, 15-deg. Load angle	
DECK TYPE	2" nominal white oak wood only	
BRAKES	Electric with wet-cell break-away system (12.25"x3.38")	
TIRES	(4) 215/75R x 17.5, load range H	
WHEELS	(4) 6.75" x 17.5", 8 bolt	
AXLES	(2) 10,000 lb. Torflex with E-Z Lube hubs	
HITCH	Adj. 3" I.D. pintle	
TIE DOWNS	(6) Heavy duty 3/4" forged D-rings	
PARKING JACK	Single 12K drop-leg jack, bolted on	
SAFETY CHAINS	3/8" high tensile x 40" long with safety hooks and latches	
TOOL BOX	Std. (Lid optional)	
MUD FLAPS	Std.	
SIDE RAILS (in/mm)	3" / 76 high	
MAIN FRAME	High-tensile W10 x 17 beam (one piece cold formed tongue)	
HEAD BOARD	4" channel iron	
X-MEMBERS	High-tensile 3" jr. I-beam, 16" / 406 o.c.	
WIRING	Sealed modular harness with circuit breakers	
LIGHTING (reflectorized)	Sealed beam, flush/shock mounted	
REG. HOLDER	Std.	
FINISH (before decking)	5-stage polyurethane under and overcoat system	
OPTIONS (other options may be available)	<ul style="list-style-type: none"> ▪ Additional tie downs ▪ Attachment holders ▪ Full width ramps ▪ Gooseneck ▪ Slipper spring suspension ▪ Spare tire/rim ▪ Spare tire carrier ▪ Special color (no metallics) ▪ Vertical boring machine option: both ramps mounted to same side ▪ Winch and cable ▪ 2-5/16" ball coupler ▪ 25,000 lb. two-speed jack ▪ Stake pockets/rub rail ▪ Tool box lid 	